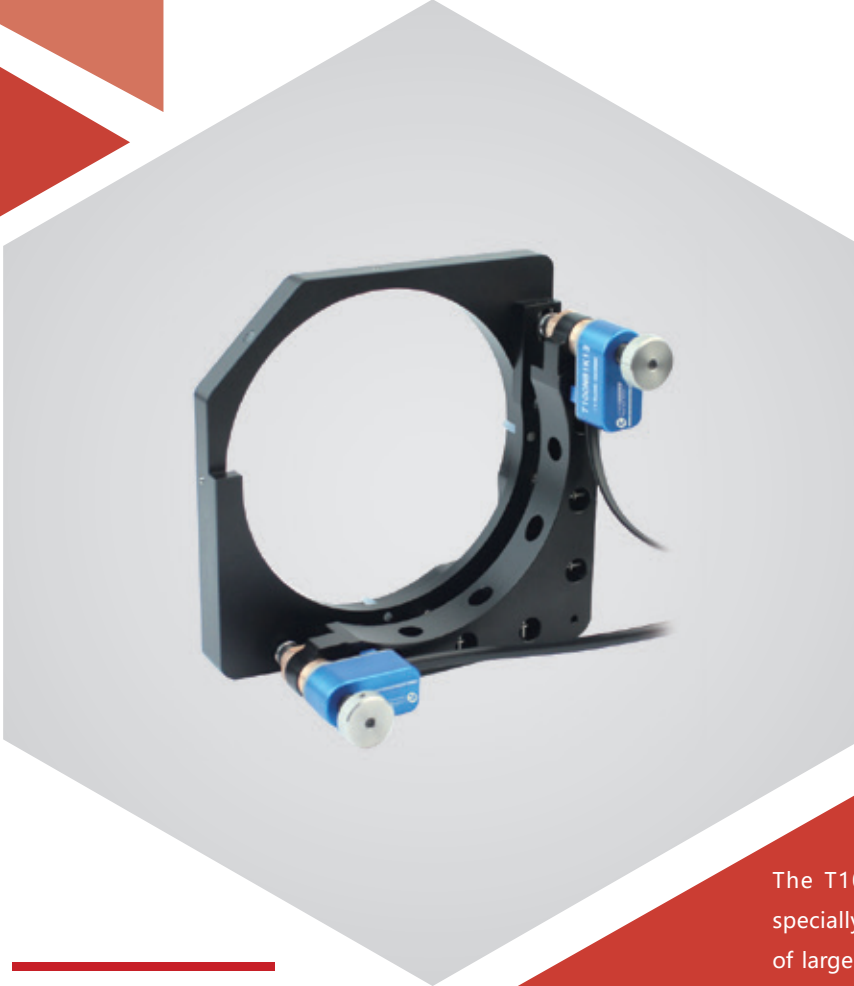


$\theta_x\theta_y$ axis | T100N81K13

Optical Mount with Piezo Linear Actuator



Characteristics >>

- Two-dimensional deflection motion
- Sub-micro-radian angular resolution
- Power-off self-locking
- Suitable for cage structure
- More flexible with motorized operation

Applications >>

- Stable adjustment in optical paths
- Long-term positioning
- Touch-free adjustment of hard-to-reach places
- Two-dimensional deflection adjustment of large mirrors, etc.

Introduction

The T100N81K13 piezoelectric mirror mount is specially designed for automatic angular deflection of large mirror. It has two linear actuation points for two-dimensional $\theta_x \theta_y$ deflection motion adjustment of the mirror.



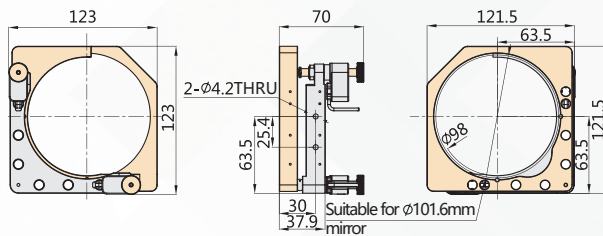
Harbin Core Tomorrow Science & Technology Co., Ltd.

Tel: +86-451-86268790 Email: info@coremorrow.com
Fax: +86-451-86267847 Web: www.coremorrow.com

Headquarters: Building I2, No.191 Xuefu Road, Nangang District, Harbin
Shanghai Office: Building 2, No.608 Shengxia Road, Pudong District, Shanghai

Technical Data >>

Type	T100N81K13	Units
Type	Center mount	
Active axes	θ_x, θ_y	
Mirror diameter	101.6	mm
Motorized axes	2	pcs
Tilt range	± 3.5	$^{\circ}$
Angular resolution	0.7	μrad
Actuator	Piezo screw actuator	
Mass	460	$\text{g} \pm 5\%$
Operating temperature	10~40	$^{\circ}\text{C}$
Recommended controller	E53.C4K	
PZT connector	RJ11	

Drawing >>


Note: Mirror with a thickness of no more than 10mm can be mounted

Recommended Controllers >>


E53.C4K
 4 control interfaces, digital control
 USB and serial port communication



Harbin Core Tomorrow Science & Technology Co., Ltd.

Tel: +86-451-86268790 Email: info@coremorrow.com
 Fax: +86-451-86267847 Web: www.coremorrow.com

Headquarters: Building I2, No.191 Xuefu Road, Nangang District, Harbin
 Shanghai Office: Building 2, No.608 Shengxia Road, Pudong District, Shanghai