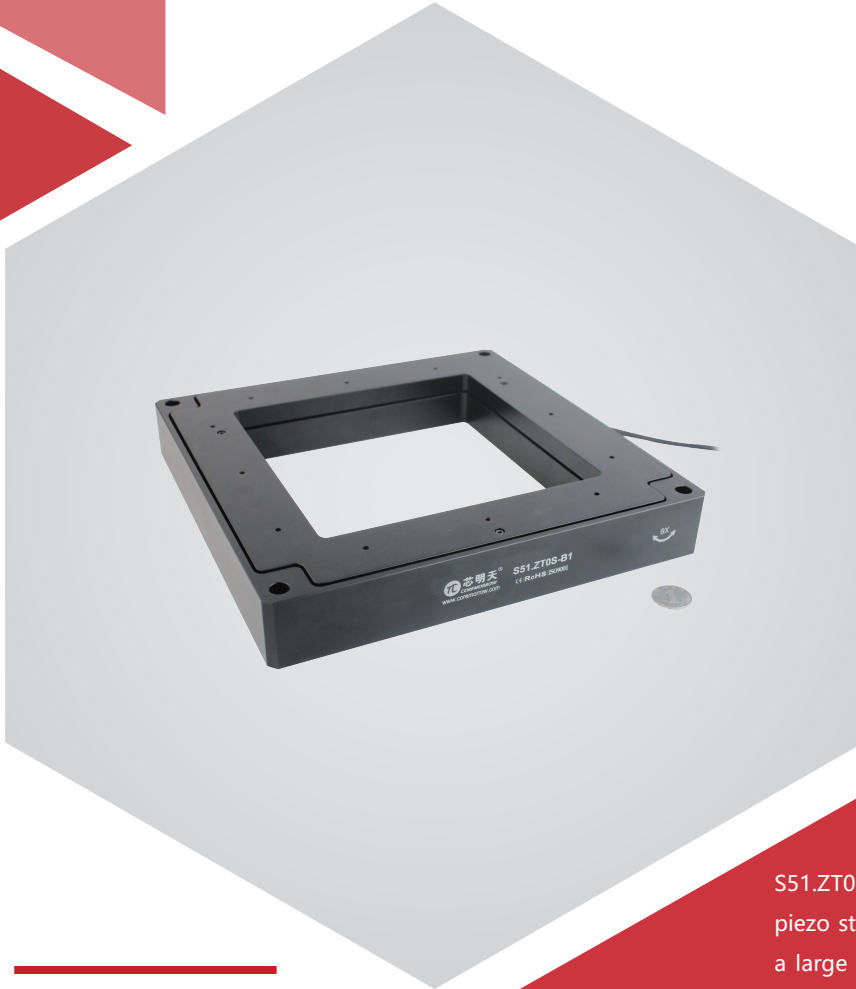


$\theta_x/\theta_y/Z$ axes | S51.ZT0S/K

Piezo Tip/Tilt and Z Stage



Introduction

S51.ZT0S/K Piezo Z/Tip/Tilt Platform is one customized piezo stage that tilts in θ_x , θ_y and moves in Z. There is a large aperture in its center that is suitable for light-transmitted applications.

Characteristics >>

- θ_x , θ_y and Z motion
- Closed-loop version for high accuracy
- Fast response
- Aperture size of 200×200mm
- Available UHV version

Applications >>

- Optical beam scanning
- Light path adjustment
- Graphical stability
- Interference/metering
- Large loading tilt motion
- Space perturbation simulation system
- Calibration of acceleration sensor
- Calibration of angular velocity sensor



Harbin Core Tomorrow Science & Technology Co., Ltd.

Tel: +86-451-86268790

Email: info@coremorrow.com

Headquarters: Building I2, No.191 Xuefu Road, Nangang District, Harbin

Fax: +86-451-86267847

Web: www.coremorrow.com

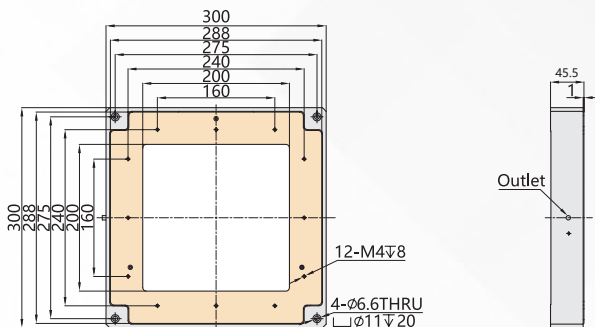
Shanghai Office: Building 2, No.608 Shengxia Road, Pudong District, Shanghai

Technical Data >>

Types	S51.ZT0S	S51.ZT0K	Units
Active axes	$\theta x \theta y Z$	$\theta x \theta y Z$	
Nominal travel in Z(0 ~120V)	90	90	$\mu m \pm 10\%$
Travel in Z(0 ~150V)	110	110	$\mu m \pm 10\%$
Nominal travel in $\theta x \theta y$ (0~120V)	$\pm 0.32/\text{axis}$	$\pm 0.32/\text{axis}$	$\text{mrad} \pm 10\%$
Travel in $\theta x \theta y$ (0~150V)	$\pm 0.4/\text{axis}$	$\pm 0.4/\text{axis}$	$\text{mrad} \pm 10\%$
Sensor type	SGS	-	
Resolution in Z	10	3	nm
Resolution in $\theta x \theta y$	0.25	0.1	urad
Closed-loop linearity	0.05	-	%F.S.
Closed-loop repeatability	0.03	-	%F.S.
Blocking force in Z	500	500	N
Stiffness in Z	8	8	$\text{N}/\mu m$
El.capacitance	7.2 /axis	7.2 /axis	$\mu F \pm 20\%$
Load capacity	5	5	kg
Unloaded resonant frequency	230	230	$\text{Hz} \pm 20\%$
Resonant frequency@3kg	150	150	$\text{Hz} \pm 20\%$
Step Time	40@3kg	10	$\text{ms} \pm 20\%$
Mass	5 (Cable not included)	5 (Cable not included)	kg
Material	Al, Steel	Al, Steel	

Note: Above parameters are measured with the E00/E01 piezo controller. The maximum driving voltage can be -20V~150V; For high-reliability and long-term operation, the recommended driving voltage is 0~120V.

Drawing >>



Recommended Controllers >>



E01.D3
 LCD, membrane button, up to 625mA
 RS-232/RS-422/USB interface
 Software secondary development



E70
 Small size, ave current 70mA/channel
 RS-232/RS-422/USB interface
 Software secondary development



Harbin Core Tomorrow Science & Technology Co., Ltd.

Tel: +86-451-86268790 Email: info@coremorrow.com
 Fax: +86-451-86267847 Web: www.coremorrow.com

Headquarters: Building I2, No.191 Xuefu Road, Nangang District, Harbin
 Shanghai Office: Building 2, No.608 Shengxia Road, Pudong District, Shanghai