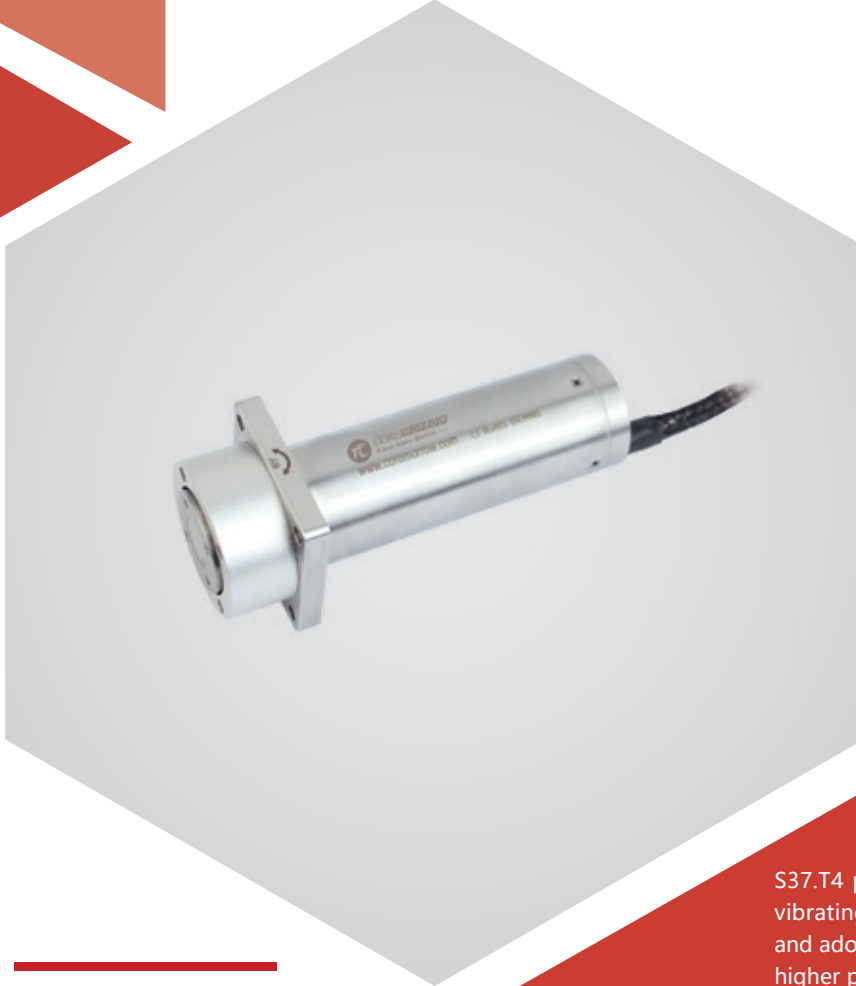


θ_x, θ_y axes | S37.T4S/KF

Piezo Tip/Tilt Platform



Introduction

S37.T4 piezo tip/tilt platform is specially designed for vibrating environments, with anti-vibration properties, and adopt a fully closed loop method, which can provide higher positioning accuracy.

Characteristics >>

- θ_x, θ_y tilt
- Anti-vibration design
- High reliability
- Optional open/closed loop

Applications >>

- Optical trapping
- Laser tuning
- Beam stability
- Light filter/optical switch
- Image processing and stabilization
- Laser scanning/beam deflection
- Optical



Harbin Core Tomorrow Science & Technology Co., Ltd.

Tel: +86-451-86268790 Email: info@coremorrow.com
Fax: +86-451-86267847 Web: www.coremorrow.com

Headquarters: Building I2, No.191 Xuefu Road, Nangang District, Harbin
Shanghai Office: Building 2, No.608 Shengxia Road, Pudong District, Shanghai

Technical Data >>

Type	S - closed loop K - open loop	S37.T4SF	S37.T4KF	Units
Active axes		θ_x, θ_y	θ_x, θ_y	
Driving channels		3	3	
Tilt angle(0~120V)		5/±2.5	5/±2.5	mrاد±20%
Tilt angle(0~150V)		6.8/±3.4	6.8/±3.4	mrاد±20%
Integrated sensor		SGS	-	
Resolution		0.2 (≈ 0.04")	0.05 (≈ 0.01")	μrad
Closed-loop linearity		0.1	-	%F.S.
Closed-loop repeatability		0.02	-	%F.S.
Unloaded resonant frequency		6.3		kHz±20%
El. capacitance		7.2		μF±20%
Operating temperature ^[1]		-20~80		°C
Material		Steel, titanium		
Mass		250		g±5%
Platform Length		55		mm±0.1
Cable length ^[2]		1.5		m±10mm
Sensor/voltage connector ^[2]		-		

Note: Technical data are measured by CoreMorrow E00/E01 series piezo controller. Max driving voltage could be -20V~150V, 0~120V is recommended for long-term and high-reliable operation. Unless otherwise specified, the above parameters are measured at room temperature about 25° C.

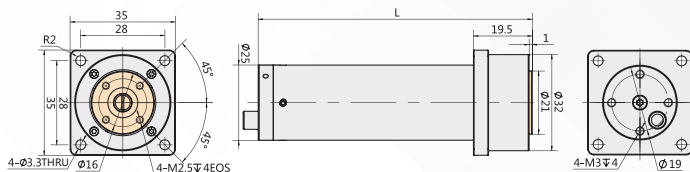
[1] Custom ultralow temperature and ultrahigh vacuum versions are available.

[2] Custom cable length and connector is available.

Note: The parallelism of the moving platform is about 20μm, and the roughness is about 1.6 to 3.2. Please contact the sales engineer for confirmation before purchase.

Drawing >>

Type	L[mm]
S37.T4S/KF	55



Recommended Controllers >>



E01.D3

LCD, membrane button, up to 625mA
 RS-232/RS-422/USB interface
 Software secondary development



E70

Small size, ave current 70mA/channel
 RS-232/RS-422/USB interface
 Software secondary development



Harbin Core Tomorrow Science & Technology Co., Ltd.

Tel: +86-451-86268790

Email: info@coremorrow.com

Headquarters: Building I2, No.191 Xuefu Road, Nangang District, Harbin

Fax: +86-451-86267847

Web: www.coremorrow.com

Shanghai Office: Building 2, No.608 Shengxia Road, Pudong District, Shanghai