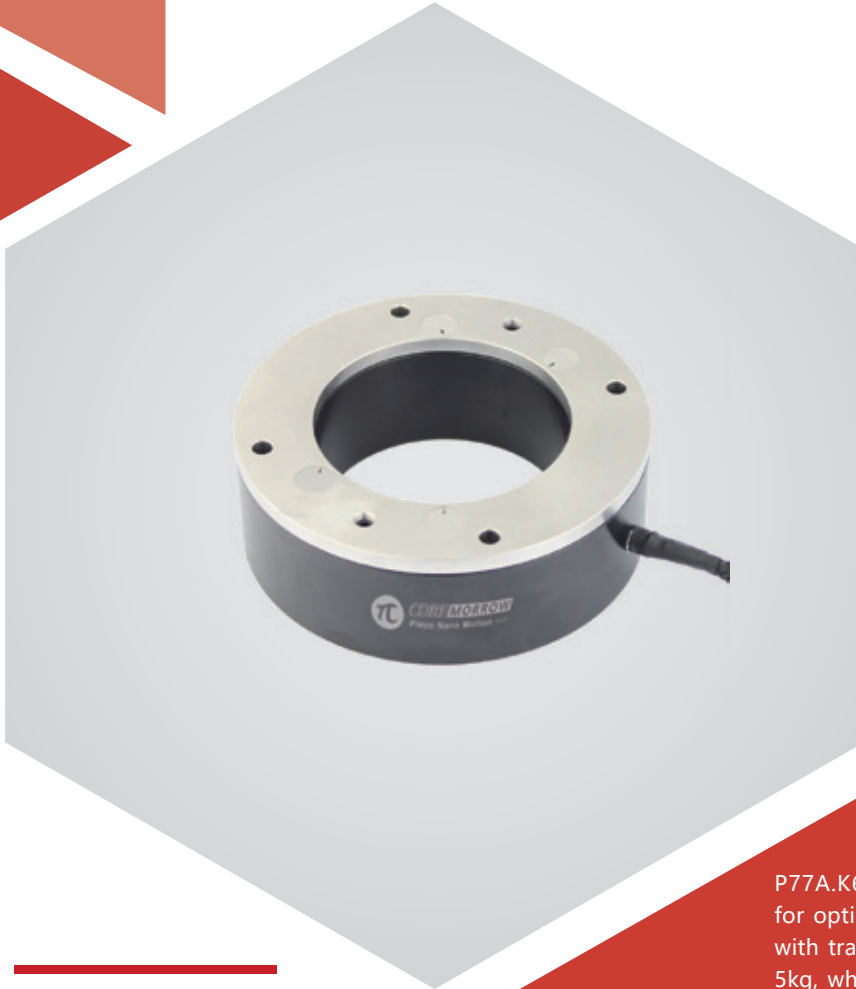


Z axis | P77A.K65

Piezo Phase Shifter



Characteristics >>

- Active axes Z
- Stroke to 20 μ m
- Max load to 5kg
- Aperture size: Φ 65mm
- Custom versions are available

Applications >>

- Optical trapping
- Surface inspection
- Precision positioning
- Microscopic imaging
- Phase shifter
- Phase shifting/interference/metering

Introduction

P77A.K65 piezo phase shifter is specially designed for optical detection and phase shifting applications, with travel range of up to 20 μ m and load capacity is 5kg, which is very suitable for large-aperture optical inspection equipment, like laser interferometer, for various lenses. Custom versions are available.



Harbin Core Tomorrow Science & Technology Co., Ltd.

Tel: +86-451-86268790

Email: info@coremorrow.com

Headquarters: Building I2, No.191 Xuefu Road, Nangang District, Harbin

Fax: +86-451-86267847

Web: www.coremorrow.com

Shanghai Office: Building 2, No.608 Shengxia Road, Pudong District, Shanghai

Technical Data >>

Type	K-Open loop	P77A.K65	Units
Active axis		Z	
Travel range(0~120V)		16	$\mu\text{m}\pm 10\%$
Travel range(0~150V)		20	$\mu\text{m}\pm 10\%$
Aperture		$\Phi 65$	mm
Outer diameter		$\Phi 105$	mm
Height		35	mm
Resolution		0.5/0.2	nm
Pitch/yaw/roll		< 10	μrad
Push/pull force capacity		100/20	N
Unloaded resonant frequency		1400	Hz $\pm 20\%$
Unloaded Step time		1	ms $\pm 20\%$
Load capacity		upright 5, lateral 2, inverted 3	kg
El. capacitance		1.8	$\mu\text{F}\pm 20\%$
Operating temperature ^[1]		-20~80	$^{\circ}\text{C}$
Material		Aluminum, steel	
Size(L×W×H)		670	mm
Cable length ^[2]		1.5	m $\pm 10\text{mm}$
Voltage connector ^[2]		LEMO	

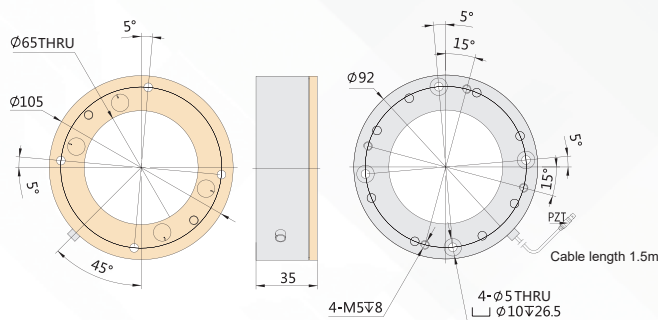
Note: Max driving voltage could be -20V~150V, 0~120V is recommended for long-term and high-reliable operation. Unless otherwise specified, the above parameters are measured at room temperature about 25 $^{\circ}\text{C}$.

[1] Custom ultralow temperature and ultrahigh vacuum versions are available.

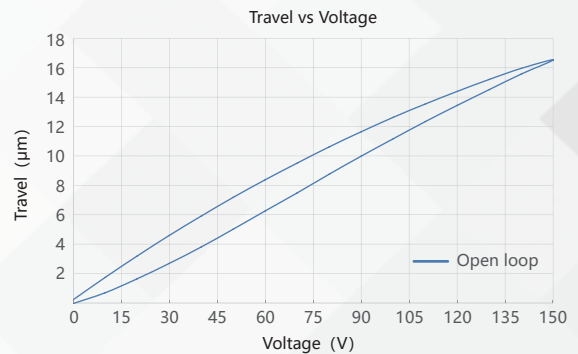
[2] Custom cable length and connector is available.

Note: The parallelism of the moving platform is about 20 μm , and the roughness is about 1.6 to 3.2. Please contact the sales engineer for confirmation before purchase.

Drawing >>



Curves >>



Disclaimer: The data here are typical, only for reference. Some variations will occur for different batch.

Recommended Controllers >>



E53
 Small size, 60mA
 RS-232/RS-422/USB interface
 Software secondary development



E70
 Small size, ave current 70mA/channel
 RS-232/RS-422/USB interface
 Software secondary development



Harbin Core Tomorrow Science & Technology Co., Ltd.

Tel: +86-451-86268790

Email: info@coremorrow.com

Headquarters: Building I2, No.191 Xuefu Road, Nangang District, Harbin

Fax: +86-451-86267847

Web: www.coremorrow.com

Shanghai Office: Building 2, No.608 Shengxia Road, Pudong District, Shanghai