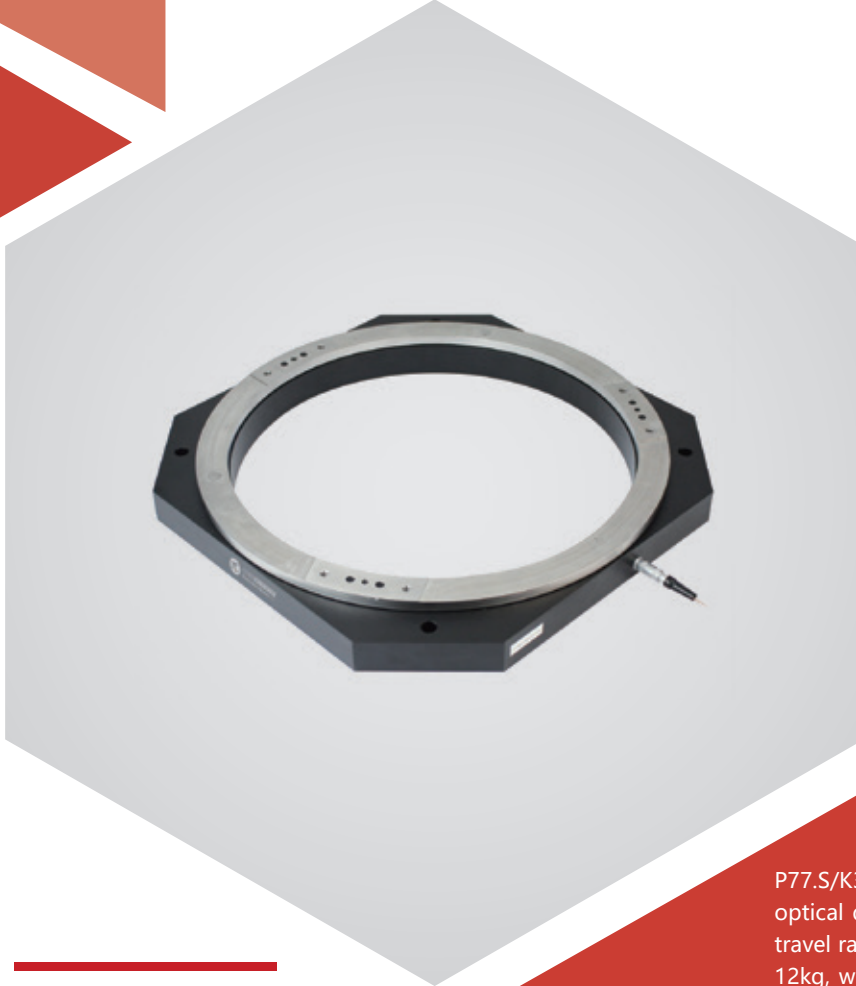


Z axis | P77.S/K310

Piezo Phase Shifter



Characteristics >>

- Active axes Z
- Stroke to 17 μ m
- Max load to 12kg
- Aperture size: Φ 310mm
- Custom versions are available

Applications >>

- Optical trapping
- Surface inspection
- Precision positioning
- Microscopic imaging
- Phase shifter
- Phase shifting/interference/metering

Introduction

P77.S/K310 piezo phase shifter is specially designed for optical detection and phase shifting applications, with travel range of up to 17 μ m and load capacity is upright 12kg, which is very suitable for large-aperture optical inspection equipment, like laser interferometer, for various lenses. Custom versions are available.



Harbin Core Tomorrow Science & Technology Co., Ltd.

Tel: +86-451-86268790

Email: info@coremorrow.com

Headquarters: Building I2, No.191 Xuefu Road, Nangang District, Harbin

Fax: +86-451-86267847

Web: www.coremorrow.com

Shanghai Office: Building 2, No.608 Shengxia Road, Pudong District, Shanghai

Technical Data >>

Type	S-Closed loop K-Open loop	P77.S310	P77.K310	Units
Active axis		Z	Z	
Travel range(0~120V)		13.5	13.5	μm±10%
Travel range(0~150V)		17	17	μm±10%
Sensor		SGS	-	
Aperture		Φ310	Φ310	mm
Resolution		0.5	0.2	nm
Pitch/yaw/roll		-	-	μrad
Push/pull force capacity		100/20	100/20	N
Unloaded resonant frequency		1500	1500	Hz±20%
Unloaded Step time		-	-	ms±20%
Load capacity		12	12	kg
El. capacitance		10.8	10.8	μF±20%
Operating temperature ^[1]		-20~80	-20~80	°C
Material		Al, steel	Al, steel	
Size(L×W×H)		365×365×37	365×365×37	mm
Mass		4200	4200	g±5%
Cable length ^[2]		1.5	1.5	m±10mm
Sensor/voltage connector ^[2]		LEMO	LEMO	

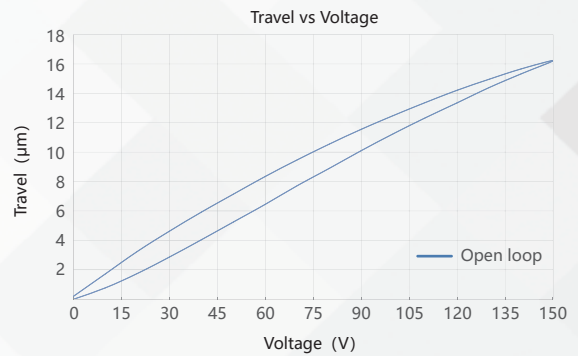
Note: Max driving voltage could be -20V~150V, 0~120V is recommended for long-term and high-reliable operation. Unless otherwise specified, the above parameters are measured at room temperature about 25° C.

[1] Custom ultralow temperature and ultrahigh vacuum versions are available.

[2] Custom cable length and connector is available.

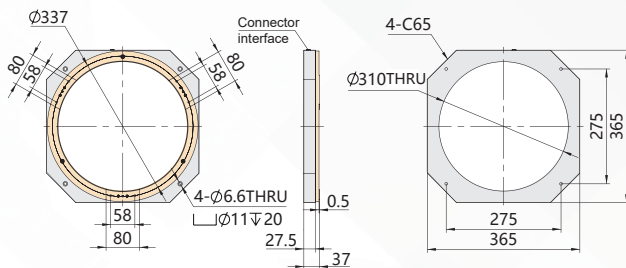
Note: The parallelism of the moving platform is about 20μm, and the roughness is about 1.6 to 3.2. Please contact the sales engineer for confirmation before purchase.

Curves >>



Disclaimer: The data here are typical, only for reference. Some variations will occur for different batch.

Drawing >>



Recommended Controllers >>



E53
Small size, 60mA
RS-232/RS-422/USB interface
Software secondary development



E70
Small size, ave current 70mA/channel
RS-232/RS-422/USB interface
Software secondary development



Harbin Core Tomorrow Science & Technology Co., Ltd.

Tel: +86-451-86268790 Email: info@coremorrow.com

Fax: +86-451-86267847 Web: www.coremorrow.com

Headquarters: Building I2, No.191 Xuefu Road, Nangang District, Harbin

Shanghai Office: Building 2, No.608 Shengxia Road, Pudong District, Shanghai