

XYZ axes | P18.XYZ200S/K

Piezo Nanopositioning Stage



Characteristics >>

- Active axes XYZ
- Stroke to 200 μ m/axis
- Load to 0.8kg
- Aperture: \varnothing 35mm
- Fast response time

Applications >>

- Scanning microscopy
- Surface inspection
- Optical metrology
- Quality assurance testing
- Image processing and stabilization
- Interference/metering
- Semiconductor measurement

Introduction

P18.XYZ200 is XYZ axes motion piezo linear scanner, it adopts amplified mechanism and built-in high-reliability piezo actuators, which could realize high-speed scanning up to 200 μ m. The aperture is \varnothing 35mm, and various displacements and specifications are available for selection. It is suitable for long-travel multi-dimensional scanning applications.



Harbin Core Tomorrow Science & Technology Co., Ltd.

Tel: +86-451-86268790

Email: info@coremorrow.com

Headquarters: Building I2, No.191 Xuefu Road, Nangang District, Harbin

Fax: +86-451-86267847

Web: www.coremorrow.com

Shanghai Office: Building 2, No.608 Shengxia Road, Pudong District, Shanghai

Technical Data >>

Type	S-Closed loop K-Open loop	P18.XYZ200S	P18.XYZ200K	Units
Active axis		XYZ	XYZ	
Driving channels		3	3	
Travel range(0~120V)		160/axis	160/axis	$\mu\text{m}\pm 10\%$
Travel range(0~150V)		200/axis	200/axis	$\mu\text{m}\pm 10\%$
Sensor		SGS	-	
Aperture		$\varnothing 35$	$\varnothing 35$	mm
Resolution		7	2	nm
Closed-loop linearity		0.4	-	%F.S.
Repeatability		0.2	-	%F.S.
Pitch/yaw/roll		<25	<25	μrad
Push/pull force capacity		30/10	30/10	N
Stiffness		0.1	0.1	$\text{N}/\mu\text{m}\pm 20\%$
Unloaded resonant frequency		X120/Y200/Z300	X120/Y200/Z300	$\text{Hz}\pm 20\%$
Unloaded Step time		80	10	$\text{ms}\pm 20\%$
Load capacity		0.8	0.8	kg
El. capacitance		11/axis	11/axis	$\mu\text{F}\pm 20\%$
Operating temperature ^[1]		-20~80	-20~80	$^{\circ}\text{C}$
Material		Aluminum	Aluminum	
Size(L×W×H)		100×100×57.5	100×100×57.5	mm
Mass		750	750	$\text{g}\pm 5\%$
Cable length ^[2]		1.5	1.5	$\text{m}\pm 10\text{mm}$
Sensor/voltage connector ^[2]		LEMO	LEMO	

Note: Max driving voltage could be -20V~150V, 0~120V is recommended for long-term and high-reliable operation. Unless otherwise specified, the above parameters are measured at room temperature about 25°C.

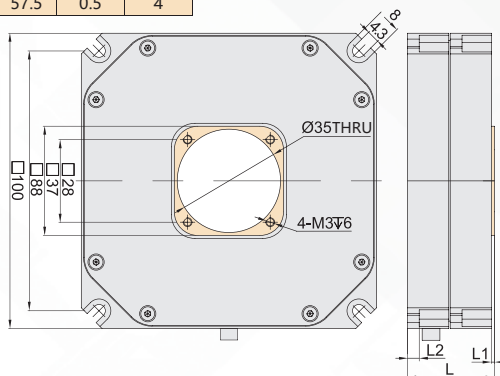
[1] Custom ultralow temperature and ultrahigh vacuum versions are available.

[2] Custom cable length and connector is available.

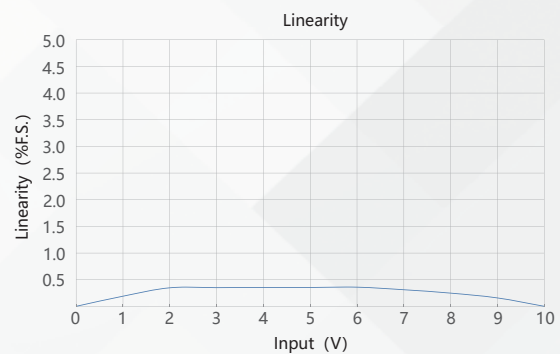
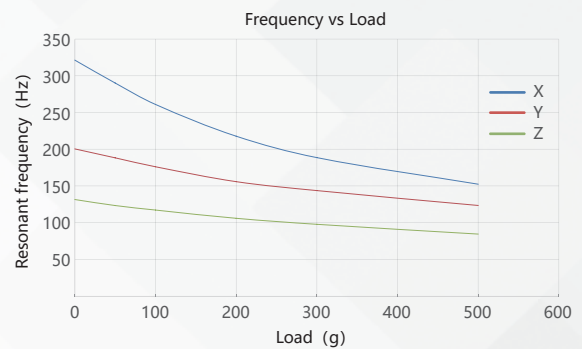
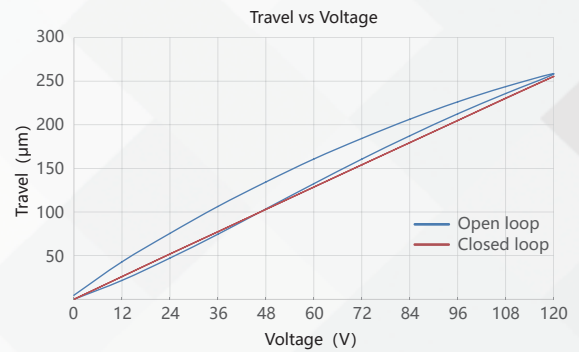
Note: The parallelism of the moving platform is about 20 μm , and the roughness is about 1.6 to 3.2. Please contact the sales engineer for confirmation before purchase.

Drawing >>

Type	L(mm)	L1(mm)	L2(mm)
P18.XYZ	57.5	0.5	4



Curves >>



Disclaimer: The data here are typical, only for reference. Some variations will occur for different batch.

Recommended Controllers >>



E01.D3

LCD, membrane button, up to 625mA
RS-232/RS-422/USB interface
Software secondary development



E70

Small size, ave current 70mA/channel
RS-232/RS-422/USB interface
Software secondary development



Harbin Core Tomorrow Science & Technology Co., Ltd.

Tel: +86-451-86268790 Email: info@coremorrow.com

Fax: +86-451-86267847 Web: www.coremorrow.com

Headquarters: Building I2, No.191 Xuefu Road, Nangang District, Harbin

Shanghai Office: Building 2, No.608 Shengxia Road, Pudong District, Shanghai