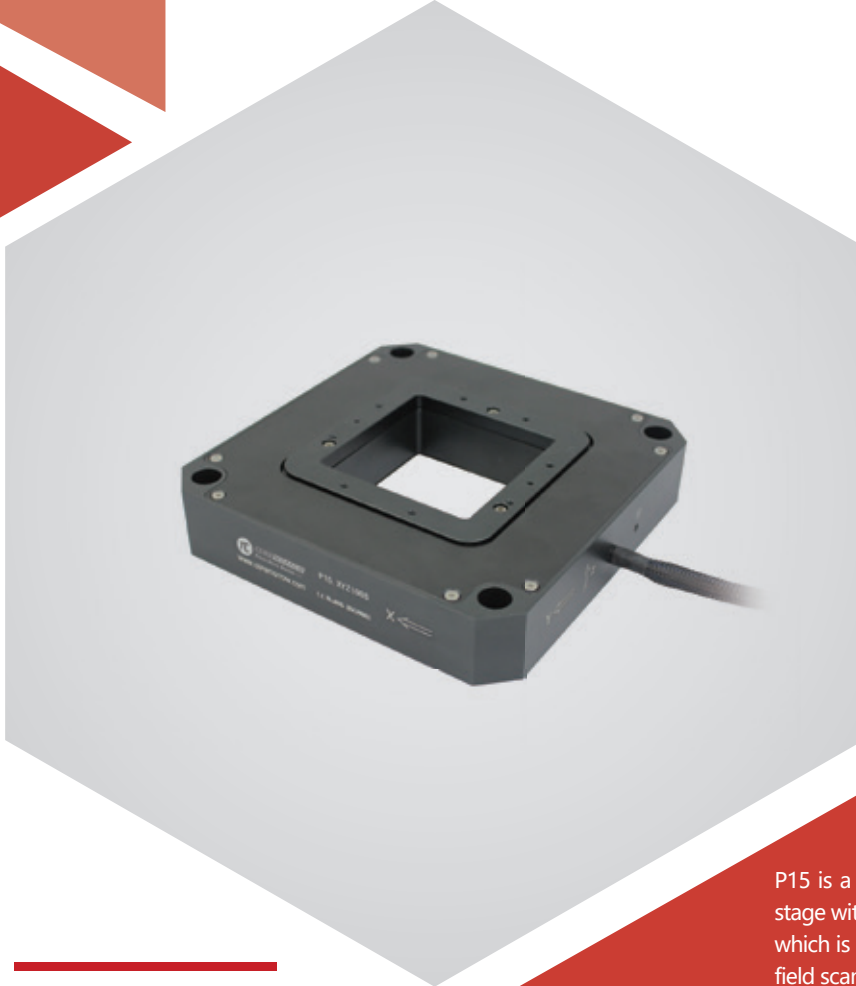


XYZ axes | P15.XYZ100S/K-B2

Piezo Nanopositioning Stages



Introduction

P15 is a fast, high-precision scanning and nanopositioning stage with very high straightness. The aperture is 60×60mm, which is ideal for transmitted-light applications such as near field scanning, confocal microscopy and mask positioning.

Characteristics >>

- 3 axes
- Aperture of 60×60mm
- Closed-loop sensor available
- Frictionless, high precision flexible guiding system

Applications >>

- Scanning microscope
- Interferometry
- Biotechnology
- Mask/wafer Positioning
- Metrology
- Micromanipulation



Harbin Core Tomorrow Science & Technology Co., Ltd.

Tel: +86-451-86268790 Email: info@coremorrow.com
Fax: +86-451-86267847 Web: www.coremorrow.com

Headquarters: Building I2, No.191 Xuefu Road, Nangang District, Harbin
Shanghai Office: Building 2, No.608 Shengxia Road, Pudong District, Shanghai

Technical Data >>

Type	S-Closed loop K-Open loop	P15.XYZ100S-B2	P15.XYZ100K-B2	Units
Active axes		X, Y, Z	X, Y, Z	
Driving channels		4	4	
Travel rang(0~120V)		XY±50 Z100	XY±50 Z100	μm±10%
Travel rang(0~150V)		XY±60 Z120	XY±60 Z120	μm±10%
Sensor		SGS	-	
Aperture		60×60	60×60	mm
Resolution		3.5	1	nm
Linearity		0.2	-	%F.S.
Repeatability		0.1	-	%F.S.
Pitch/yaw/roll		30	30	μrad
Push/pull force		XY150/20 Z100/20	XY150/20 Z100/20	N
Stiffness		1.6/1.6/0.8	1.6/1.6/0.8	N/μm±20%
Unloaded resonant frequency, X/Y/Z		389/355/400	389/355/400	Hz±20%
Load capacity		2	2	kg
El. capacitance		14.4	14.4	μF±20%
Operating temperature ^[1]		-20~80	-20~80	°C
Material		Steel, Al	Steel, Al	
Size(L×W×H)		140×140×36	140×140×36	mm
Mass		750	750	g±5%
Cable length ^[2]		1.5	1.5	m±10mm

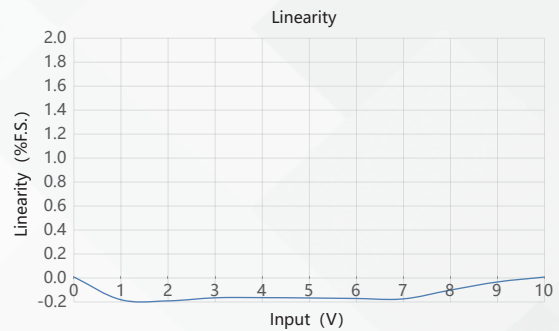
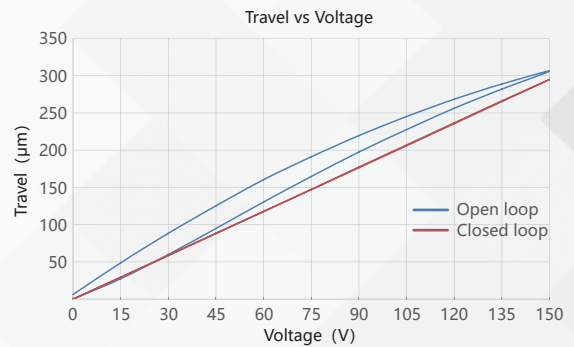
Note: Max driving voltage could be -20V~150V, 0~120V is recommended for long-term and high-reliable operation. Unless otherwise specified, the above parameters are measured at room temperature about 25° C.

[1] Custom ultralow temperature and ultrahigh vacuum versions are available.

[2] Custom cable length and connector is available.

Note: The parallelism of the moving platform is about 20μm, and the roughness is about 1.6 to 3.2. Please contact the sales engineer for confirmation before purchase.

Curves >>



Disclaimer: The data here are typical, only for reference. Some variations will occur for different batch.

Recommended Controllers >>



E01.D3

LCD, membrane button, up to 625mA
 RS-232/RS-422/USB interface
 Software secondary development



E70

Small size, 70mA/channel
 RS-232/RS-422/USB interface
 Software secondary development



Harbin Core Tomorrow Science & Technology Co., Ltd.

Tel: +86-451-86268790

Email: info@coremorrow.com

Headquarters: Building I2, No.191 Xuefu Road, Nangang District, Harbin

Fax: +86-451-86267847

Web: www.coremorrow.com

Shanghai Office: Building 2, No.608 Shengxia Road, Pudong District, Shanghai