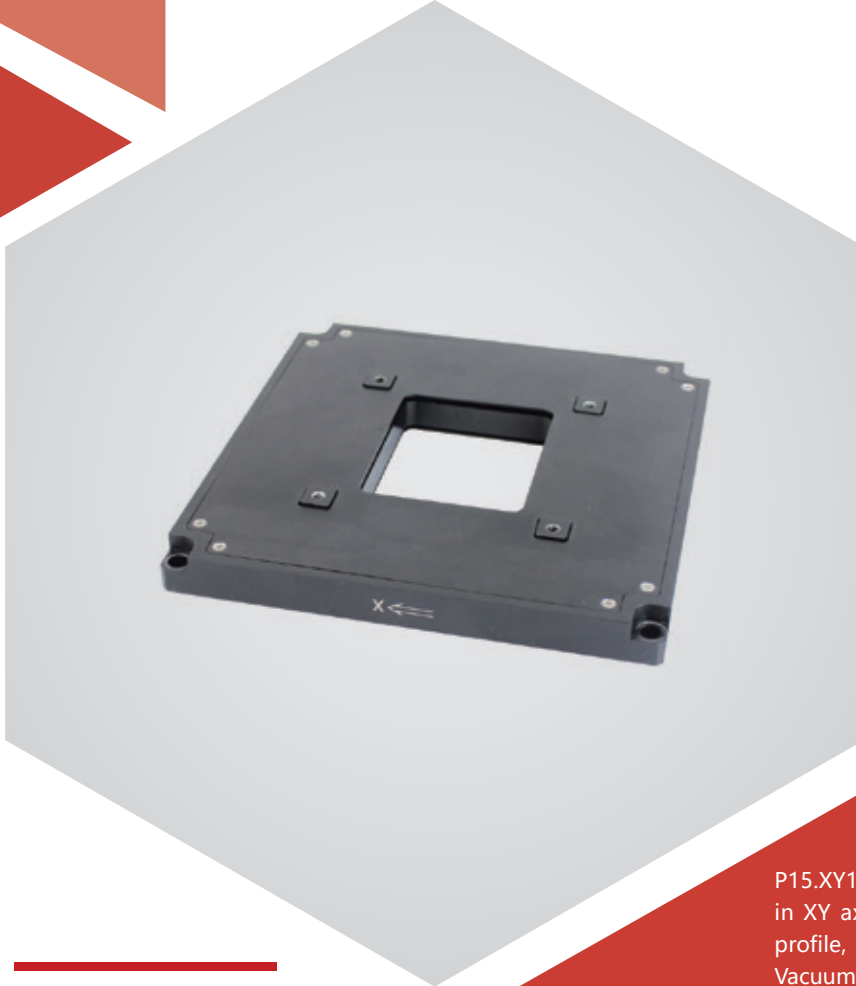


XY axes | P15.XY100S/K-B1

Piezo Nanopositioning Stage



Introduction

P15.XY100S/K-B1 piezo nanopositioning stage moves in XY axes, features 100 μ m/axis travel and very low profile, and SGS sensor is available for high accuracy. Vacuum suction cup can be installed on it.

Characteristics

- XY motion
- Travel to 100 μ m/axis
- Load capacity to 500g
- Very low profile
- Optional sensor

Applications >>

- Surface inspection
- Microscopy imaging
- Laser technology
- Semiconductor processing and test
- Metrology
- Micromanipulation



Harbin Core Tomorrow Science & Technology Co., Ltd.

Tel: +86-451-86268790 Email: info@coremorrow.com
Fax: +86-451-86267847 Web: www.coremorrow.com

Headquarters: Building I2, No.191 Xuefu Road, Nangang District, Harbin
Shanghai Office: Building 2, No.608 Shengxia Road, Pudong District, Shanghai

Technical Data >>

Types	S-Closed loop K-Open loop	P15.XY100S-B1	P15.XY100K-B1	Units
Active axes		X, Y	X, Y	
Nominal travel(0~120V)		80/axis	80/axis	$\mu\text{m}\pm 10\%$
Travel(0~150V)		100/axis	100/axis	$\mu\text{m}\pm 10\%$
Sensor type		SGS	-	
Resolution		3	1	nm
Linearity		0.15	-	%F.S.
Repeatability		0.05	-	%F.S.
Pitch/yaw/roll		≤ 10	≤ 10	μrad
Unloaded resonant frequency		490	490	Hz $\pm 20\%$
Unloaded step time		50	20	ms $\pm 20\%$
Load capacity		500	500	g
El.capacitance		14.5	14.5	$\mu\text{F}\pm 10\%$
Operating temperature ^[1]		-20~80	-20~80	$^{\circ}\text{C}$
Material		Aluminum	Aluminum	
Size(L×W×H)		160×160×16	160×160×16	mm
Cable length ^[2]		1.5	1.5	m $\pm 10\text{mm}$
Mass		730	730	g $\pm 5\%$

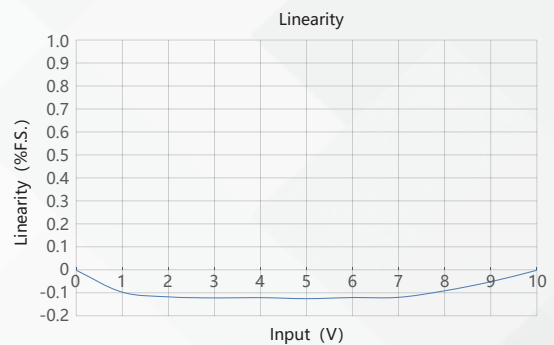
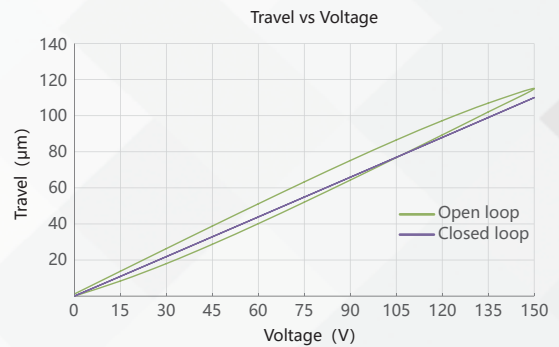
Note: Max driving voltage could be -20V~150V, 0~120V is recommended for long-term and high-reliable operation. Unless otherwise specified, the above parameters are measured at room temperature about 25 $^{\circ}\text{C}$.

[1] Custom ultralow temperature and ultrahigh vacuum versions are available.

[2] Custom cable length and connector is available.

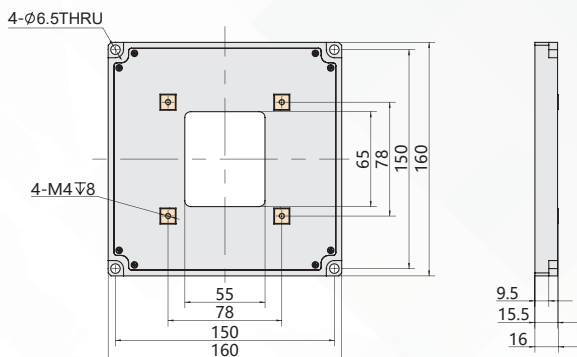
Note: The parallelism of the moving platform is about 20 μm , and the roughness is about 1.6 to 3.2. Please contact the sales engineer for confirmation before purchase.

Curves >>



Disclaimer: The data here are typical, only for reference. Some variations will occur for different batch.

Drawing >>



Recommended Controllers >>



E01.D3
LCD, membrane button, up to 625mA
RS-232/RS-422/USB interface
Software secondary development



E70
Small size, 70mA/channel
RS-232/RS-422/USB interface
Software secondary development



Harbin Core Tomorrow Science & Technology Co., Ltd.

Tel: +86-451-86268790 Email: info@coremorrow.com
Fax: +86-451-86267847 Web: www.coremorrow.com

Headquarters: Building I2, No.191 Xuefu Road, Nangang District, Harbin
Shanghai Office: Building 2, No.608 Shengxia Road, Pudong District, Shanghai