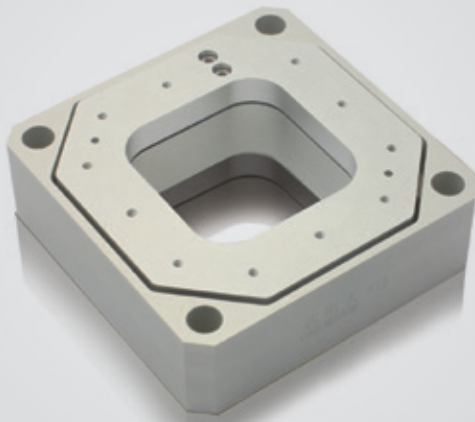


X axis | P12A.X200S/K

Piezo Nanopositioning Scanner



Characteristics >>

- Motion in X
- Travel to 200 μ m
- Load capacity to 0.5kg
- Aperture of 45 \times 45mm
- Open/closed-loop version

Applications >>

- Scanning microscopy
- Confocal microscopy
- Surface measurement
- Semiconductor test
- Image process and stability
- Micromanipulation

Introduction

The P12A.X200S/K piezo scanning stage moves in X direction, and optionally equipped with a high-resolution sensor, which detects the position in real time and feeds it back to the piezo controller.

P12A piezo scan stage, matched with CoreMorrow E70 modular controller, is applied to optical microscopy imaging to realize X axis precision scanning.



Harbin Core Tomorrow Science & Technology Co., Ltd.

Tel: +86-451-86268790

Email: info@coremorrow.com

Headquarters: Building I2, No.191 Xuefu Road, Nangang District, Harbin

Fax: +86-451-86267847

Web: www.coremorrow.com

Shanghai Office: Building 2, No.608 Shengxia Road, Pudong District, Shanghai

Technical Data >>

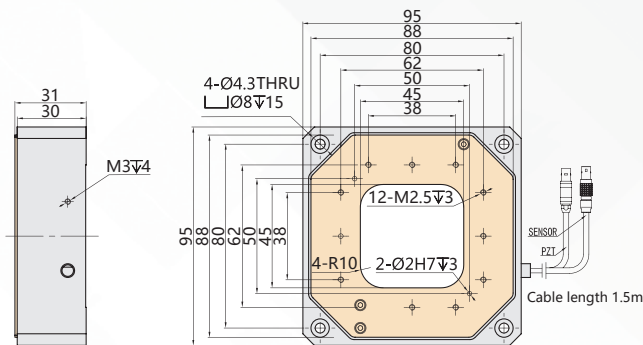
Type	S-Closed loop K-Open loop	P12A.X200S	P12A.X200K	Units
Active axes		X	X	
Travel range(0~120V)		160	160	$\mu\text{m}\pm 20\%$
Travel range(0~150V)		200	200	$\mu\text{m}\pm 20\%$
Integrated sensor		SGS	-	
Aperture		45×45	45×45	mm
Resolution		5.5	2	nm
Linearity		0.3	-	%F.S.
Repeatability		0.2	-	%F.S.
Unloaded resonant frequency		160	160	Hz $\pm 20\%$
Load capacity		0.5	0.5	kg $\pm 5\%$
El. capacitance		7.2	7.2	$\mu\text{F}\pm 20\%$
Operating temperature ^[1]		-20~80	-20~80	°C
Material		Steel, Al	Steel, Al	
Size (L×W×H)		95×95×31	95×95×31	mm
Cable length ^[2]		1.5	1.5	m $\pm 10\text{mm}$
Sensor/voltage connector ^[2]		-	-	

Note: Max driving voltage could be -20V~150V, 0~120V is recommended for long-term and high-reliable operation. Unless otherwise specified, the above parameters are measured at room temperature about 25° C.

[1] Custom ultralow temperature and ultrahigh vacuum versions are available.

[2] Custom cable length and connector is available.

Note: The parallelism of the moving platform is about 20 μm , and the roughness is about 1.6 to 3.2. Please contact the sales engineer for confirmation before purchase.

Drawing >>

Recommended Controllers >>


E01.D1
 LCD, membrane button, up to 625mA
 RS-232/RS-422/USB interface
 Software secondary development



E53
 Small size, 60mA
 RS-232/RS-422/USB interface
 Software secondary development



Harbin Core Tomorrow Science & Technology Co., Ltd.

Tel: +86-451-86268790 Email: info@coremorrow.com

Fax: +86-451-86267847 Web: www.coremorrow.com

Headquarters: Building I2, No.191 Xuefu Road, Nangang District, Harbin

Shanghai Office: Building 2, No.608 Shengxia Road, Pudong District, Shanghai