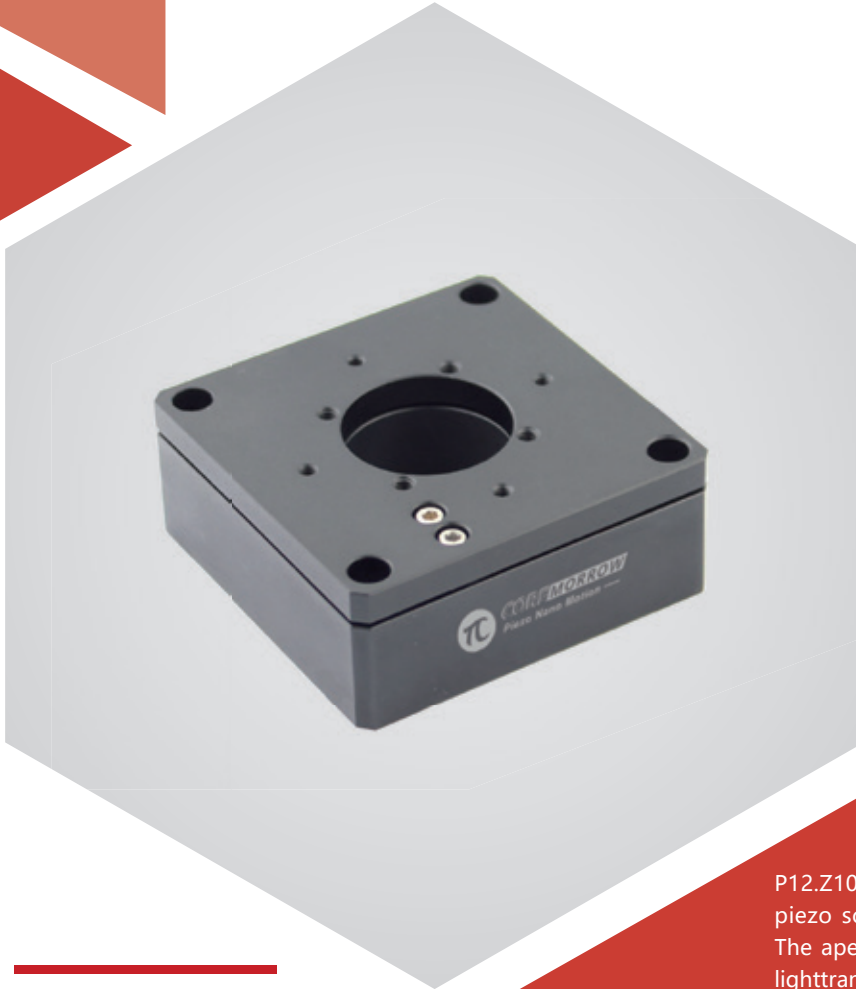


## Z axis | P12.Z200S/K

Aperture Ø25mm | Piezo Nanopositioning Stages



### Introduction

P12.Z100 is Z axis motion piezo scanning stage. The piezo scanner could realize displacement of 200 $\mu$ m. The aperture diameter as 25mm, which is suitable for lighttransmitted applications such as microscopy.

#### Characteristics >>

- Z motion
- Travel to 200 $\mu$ m
- Load capacity to 0.5kg
- Optional UHV compatible version
- Closed-loop version for high repeatability

#### Applications >>

- Scanning interference
- Surface measurement
- Optical capture
- Confocal microscopy
- Wafer positioning
- Image processing and stabilization



**Harbin Core Tomorrow Science & Technology Co., Ltd.**

Tel: +86-451-86268790

Email: [info@coremorrow.com](mailto:info@coremorrow.com)

Headquarters: Building I2, No.191 Xuefu Road, Nangang District, Harbin

Fax: +86-451-86267847

Web: [www.coremorrow.com](http://www.coremorrow.com)

Shanghai Office: Building 2, No.608 Shengxia Road, Pudong District, Shanghai

## Technical Data >>

Type	S-Closed loop K-Open loop	P12.Z200S	P12.Z200K	Units
Active axes		Z	Z	
Travel range(0~120V)		160	160	$\mu\text{m}\pm 10\%$
Travel range(0~150V)		200	200	$\mu\text{m}\pm 10\%$
Sensor		SGS	-	
Aperture		$\varnothing 25$	$\varnothing 25$	mm
Closed/open loop resolution		5.5	2	nm
Linearity		0.1	-	%F.S.
Repeatability		0.05	-	%F.S.
Pitch/yaw/roll		<15	<15	$\mu\text{rad}$
Push/pull force		30/10	30/10	N
Stiffness		0.2	0.2	$\text{N}/\mu\text{m}\pm 20\%$
Unloaded resonant frequency		150	150	$\text{Hz}\pm 20\%$
Closed/open-loop unloaded step time		15	1.6	$\text{ms}\pm 20\%$
Load capacity		0.5	0.5	kg
El. capacitance		3.6	3.6	$\mu\text{F}\pm 20\%$
Operating temperature <sup>[1]</sup>		-20~80	-20~80	$^{\circ}\text{C}$
Material		Steel, Al	Steel, Al	
Size(L×W×H)		60×60×24	60×60×24	mm
Mass		200	200	$\text{g}\pm 5\%$
Cable length <sup>[2]</sup>		1.5	1.5	$\text{m}\pm 10\text{mm}$
Connector <sup>[2]</sup>		-	-	

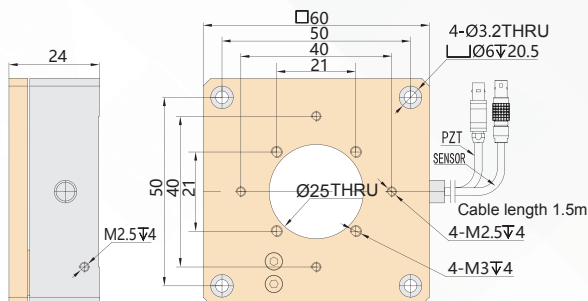
Note: Max driving voltage could be -20V~150V, 0~120V is recommended for long-term and high-reliable operation. Unless otherwise specified, the above parameters are measured at room temperature about 25°C.

[1] Custom ultralow temperature and ultrahigh vacuum versions are available.

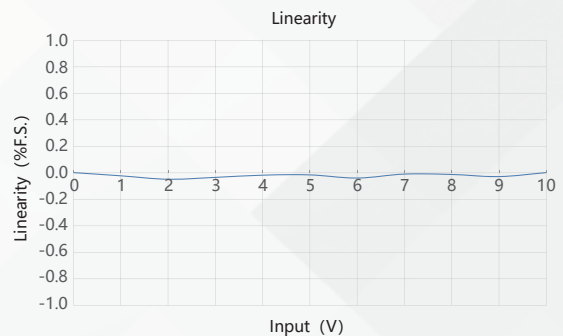
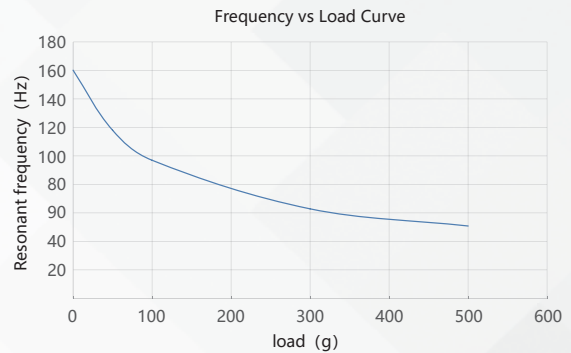
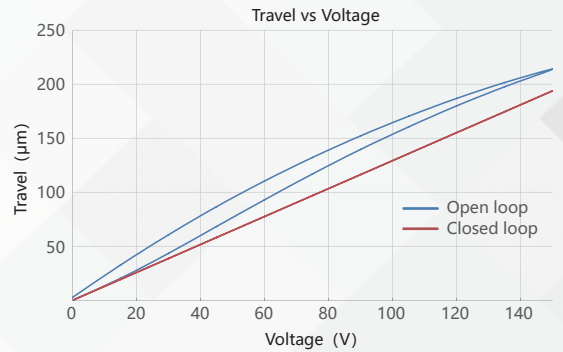
[2] Custom cable length and connector is available.

Note: The parallelism of the moving platform is about 20 $\mu\text{m}$ , and the roughness is about 1.6 to 3.2. Please contact the sales engineer for confirmation before purchase.

## Drawing >>



## Curves >>



Disclaimer: The data here are typical, only for reference. Some variations will occur for different batch.

## Recommended Controllers >>



**E01.D1**  
LCD, membrane button, up to 625mA  
RS-232/RS-422/USB interface  
Software secondary development



**E53**  
Small size, 60mA  
RS-232/RS-422/USB interface  
Software secondary development



Harbin Core Tomorrow Science & Technology Co., Ltd.

Tel: +86-451-86268790 Email: info@coremorrow.com

Fax: +86-451-86267847 Web: www.coremorrow.com

Headquarters: Building I2, No.191 Xuefu Road, Nangang District, Harbin

Shanghai Office: Building 2, No.608 Shengxia Road, Pudong District, Shanghai