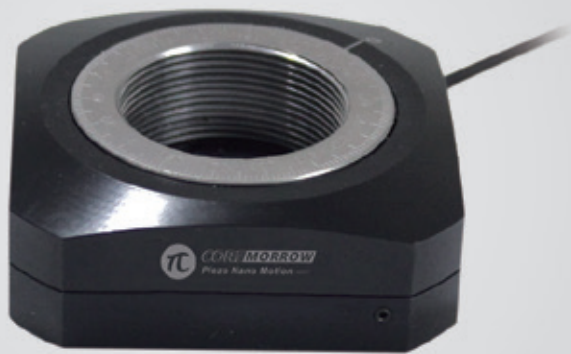


# 360, Two-way axes | N61.R5K

## Rotation Piezo Motor



### Characteristics >>

- 360 degrees rotation
- Speed to 15° /s
- Analog or PC control

### Applications >>

- Wafer inspection
- Profilometry
- Nano lithography
- Nanotechnology and metrology
- Microscopy
- Semiconductor technology
- Surface measurement technique
- Motion in strong magnetic fields or vacuum

## Introduction

N61.R5K piezo motor is a piezo motor direct-driven by piezo ceramics. It uses special mechanical structure design to convert linear microdisplacement generated by piezo ceramics into macro-angle rotation motion of mechanical platform.

It has 360° rotary motion and has ultra-high rotation resolution.



**Harbin Core Tomorrow Science & Technology Co., Ltd.**

Tel: +86-451-86268790

Email: [info@coremorrow.com](mailto:info@coremorrow.com)

Headquarters: Building I2, No.191 Xuefu Road, Nangang District, Harbin

Fax: +86-451-86267847

Web: [www.coremorrow.com](http://www.coremorrow.com)

Shanghai Office: Building 2, No.608 Shengxia Road, Pudong District, Shanghai

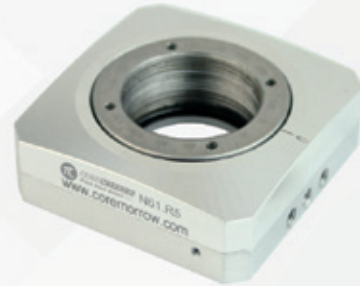
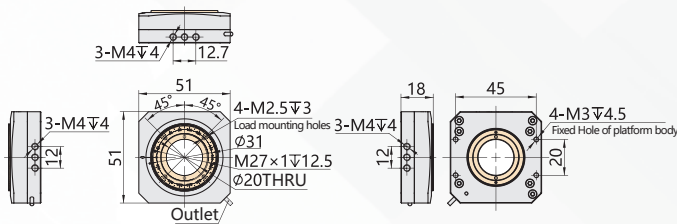
**Technical Data >>**

Type	N61.R5K	Units
Active axes	360, two-way	°
Speed limit	15	° /s±20%
Central loading	2	kg±20%
Resolution	10	μrad±20%
Repeatability	-	°
Eccentricity	0.05	mm
Operating temperature <sup>[1]</sup>	10~40	°C
Storage temperature	-10~40	°C
Mass	130	g±10%
Material	Al, Steel	
Size (L×W×H)	51×51×18	mm
Cable length <sup>[2]</sup>	1.2	m±10mm
Connector <sup>[2]</sup>	-	
Recommended controller	E53.C1K-J	

Remarks:

[1] Custom is available.

[2] Custom cable length and connector are available.

**Optional Vacuum >>**

**Drawing >>**

**Recommended Controller >>**

**E53.C1K-J**

 1 channel, analog and digital control  
 Small size, compact structure  
 Open loop control

**Harbin Core Tomorrow Science & Technology Co., Ltd.**

Tel: +86-451-86268790

Email: info@coremorrow.com

Headquarters: Building I2, No.191 Xuefu Road, Nangang District, Harbin

Fax: +86-451-86267847

Web: www.coremorrow.com

Shanghai Office: Building 2, No.608 Shengxia Road, Pudong District, Shanghai