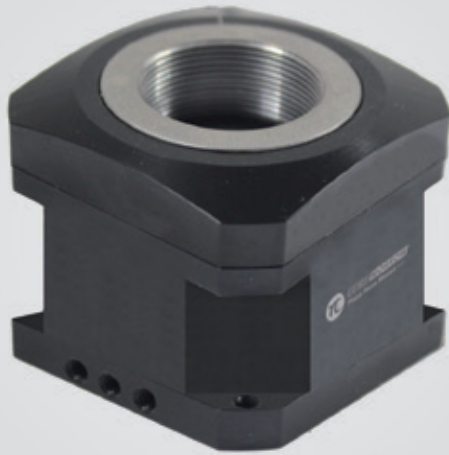


360° Rotation | N61.R5E

Rotation Piezo Motor



Characteristics >>

- 360 degrees rotation
- Speed to 15° /s
- PC control

Applications >>

- Wafer inspection
- Profilometry
- Nano lithography
- Nanotechnology and metrology
- Microscopy
- Semiconductor technology
- Surface measurement technique
- Motion in strong magnetic fields or vacuum

Introduction

N61.R5E piezo motor is a piezo motor direct-driven by piezo ceramics. It uses special mechanical structure design to convert linear microdisplacement generated by piezo ceramics into macro-angle rotation motion of mechanical platform.

It has 360 ° rotary motion and has ultra-high rotation resolution.



Harbin Core Tomorrow Science & Technology Co., Ltd.

Tel: +86-451-86268790

Email: info@coremorrow.com

Headquarters: Building I2, No.191 Xuefu Road, Nangang District, Harbin

Fax: +86-451-86267847

Web: www.coremorrow.com

Shanghai Office: Building 2, No.608 Shengxia Road, Pudong District, Shanghai

Technical Data >>

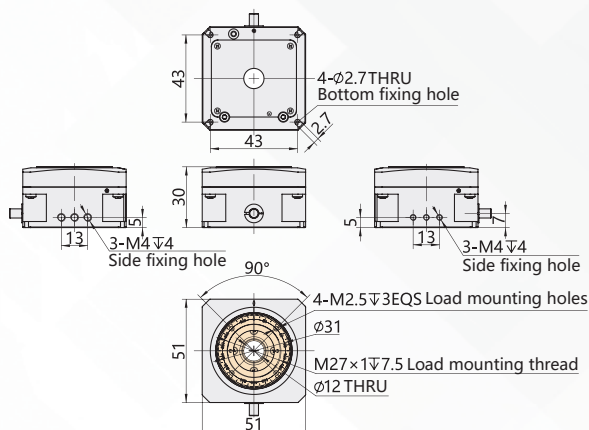
Type	N61.R5E	Units
Active axes	360, two-way	°
Integrated sensor	grating sensor	
Speed limit	15	°/s±20%
Central loading	1	kg±20%
Resolution	1	μrad±20%
Repeatability	0.001	°
Eccentricity	0.05	mm
Operating temperature ^[1]	10~40	°C
Storage temperature	-10~40	°C
Mass	230	g±10%
Material	Al, Steel	
Size (L×W×H)	51×51×30	mm
Cable length ^[2]	1.5	m±10mm
Connector ^[2]	-	
Recommended controller	E53.D1E-J	

Remarks:

[1] Custom is available.

[2] Custom cable length and connector are available.

Optional Vacuum >>

Drawing >>

Recommended Controller >>

E53.D1E-J

 1 channel, analog and digital control
 Small size, compact structure
 Open loop control

Harbin Core Tomorrow Science & Technology Co., Ltd.

Tel: +86-451-86268790

Email: info@coremorrow.com

Headquarters: Building I2, No.191 Xuefu Road, Nangang District, Harbin

Fax: +86-451-86267847

Web: www.coremorrow.com

Shanghai Office: Building 2, No.608 Shengxia Road, Pudong District, Shanghai