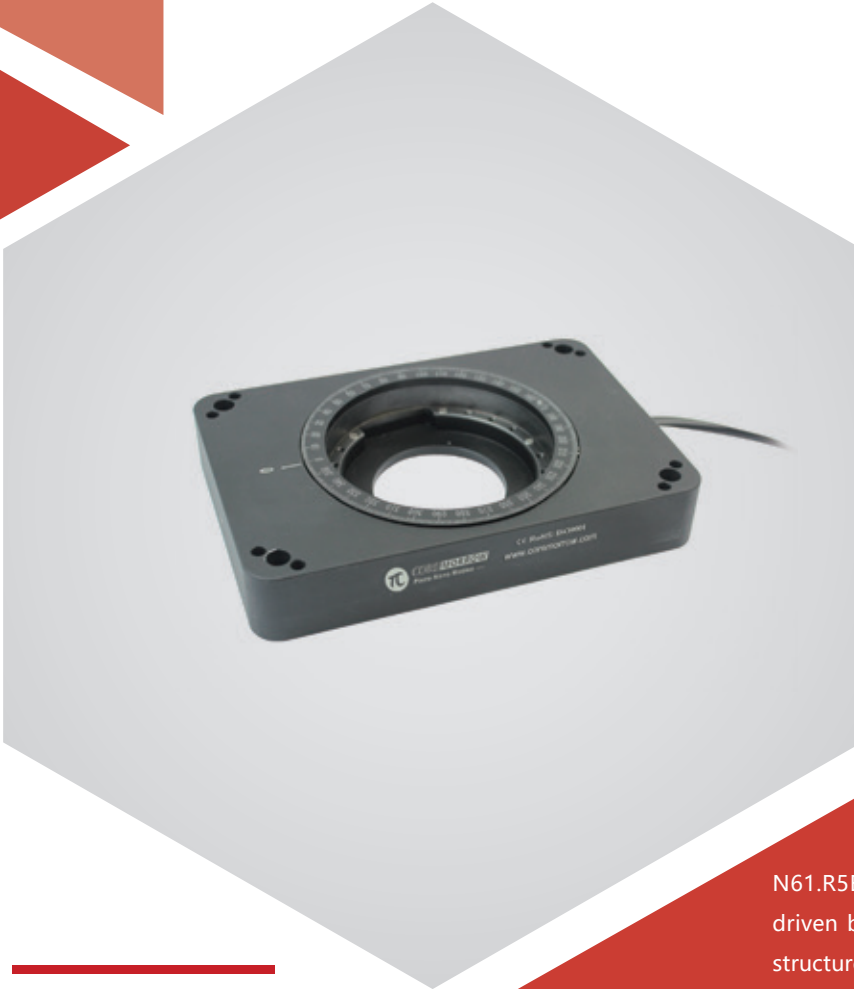


# $\theta$ z axis | N61.R5E/K-C1 Rotation Piezo Motor



## Characteristics >>

- 360 degrees rotation
- Speed to 5° /s
- Analog or PC control

## Applications >>

- Wafer inspection
- Profilometry
- Nano lithography
- Nanotechnology and metrology
- Microscopy
- Semiconductor technology
- Surface measurement technique
- Motion in strong magnetic fields or vacuum

## Introduction

N61.R5E/K-C1 piezo motor is a piezo motor direct-driven by piezo ceramics. It uses special mechanical structure design to convert linear microdisplacement generated by piezo ceramics into macro-angle rotation motion of mechanical platform.

It has 360° rotary motion and has ultra-high rotation resolution.



**Harbin Core Tomorrow Science & Technology Co., Ltd.**

Tel: +86-451-86268790

Email: [info@coremorrow.com](mailto:info@coremorrow.com)

Headquarters: Building I2, No.191 Xuefu Road, Nangang District, Harbin

Fax: +86-451-86267847

Web: [www.coremorrow.com](http://www.coremorrow.com)

Shanghai Office: Building 2, No.608 Shengxia Road, Pudong District, Shanghai

