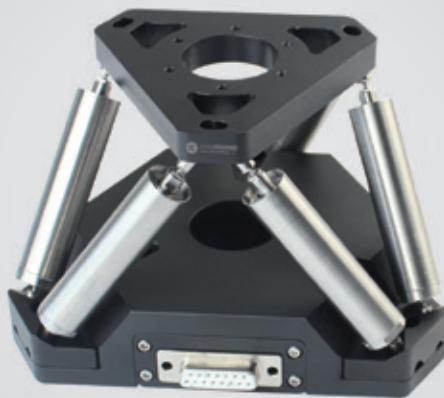


Hexapod | H60.XYZTR1S/K

Piezo Hexapod



Characteristics >>

- Motion in X, Y, Z, θ_x , θ_y , θ_z
- Closed-loop control with high accuracy
- Ultra small coupling
- No accumulation of error

Applications >>

- 6 axes precise positioning
- Semiconductor equipment
- Wafer inspection/micromachining
- Lithography
- Medical
- Aerospace

Introduction

H60.XYZTR1S/K Piezo Hexapod is a piezo stage with 6-axis motion of θ_x , θ_y , θ_z , X, Y, and Z 6-axis movement in space is realized by the coordinated expansion and contraction of six piezoelectric actuators. The closed-loop model has high positioning accuracy. It is suited for applications such as microelectronics precision machining, test, etc.



Harbin Core Tomorrow Science & Technology Co., Ltd.

Tel: +86-451-86268790 Email: info@coremorrow.com
Fax: +86-451-86267847 Web: www.coremorrow.com

Headquarters: Building I2, No.191 Xuefu Road, Nangang District, Harbin
Shanghai Office: Building 2, No.608 Shengxia Road, Pudong District, Shanghai

Technical Data >>

Type	S-Closed loop K-Open loop	H60.XYZTR1S	H60.XYZTR1K	Units
Active axes		X, Y, Z, θ_x , θ_y , θ_z		
Linear travel in X, Y (0~120V)		± 6.5	± 6.5	$\mu\text{m} \pm 20\%$
Linear travel in Z (0~120V)		± 3.2	± 3.2	$\mu\text{m} \pm 20\%$
Tilt angle in θ_x , θ_y (0~120V)		± 0.16 ($\approx \pm 30''$)		$\text{mrad} \pm 20\%$
Tilt angle in θ_z (0~120V)		± 0.24 ($\approx \pm 50''$)		$\text{mrad} \pm 20\%$
Tilt resolution (θ_x , θ_y)		0.02 (< 0.01")	0.01 (< 0.01")	μrad
Tilt resolution, θ_z		0.04 (< 0.01")	0.02 (< 0.01")	μrad
Resolution in X, Y		0.8	0.4	nm
Resolution in Z		0.4	0.2	nm
Stiffness		50	50	$\text{N}/\mu\text{m} \pm 20\%$
Closed-loop linearity		0.25	-	%F.S.
Closed-loop repeatability		0.1	-	%F.S.
Structure		Hexapods		
Driving source		Piezo actuators		
Operating temperature ^[1]		-20~80	-20~80	$^{\circ}\text{C}$
Load capacity		5	5	kg
Mass		1000	1000	$\text{g} \pm 5\%$
Cable length ^[2]		1.5	1.5	$\text{m} \pm 10\text{mm}$
Sensor/voltage connector ^[2]		-	-	

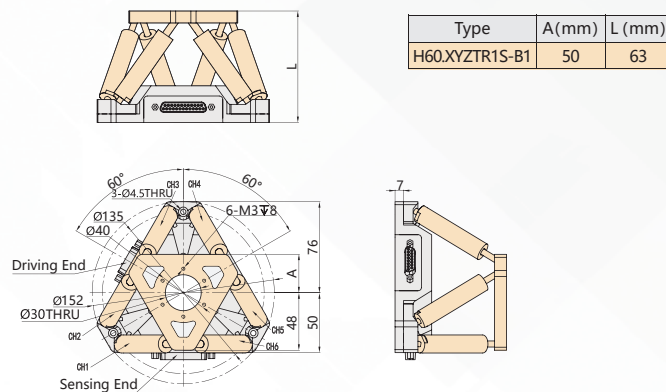
Note: Technical data are measured by CoreMorrow E00/E01 series piezo controller. Max driving voltage could be -20V~150V, 0~120V is recommended for long-term and high-reliable operation. Unless otherwise specified, the above parameters are measured at room temperature about 25° C.

[1] Custom ultralow temperature and ultrahigh vacuum versions are available.

[2] Custom cable length and connector is available.

Note: The parallelism of the moving platform is about 20 μm , and the roughness is about 1.6 to 3.2. Please contact the sales engineer for confirmation before purchase.

Drawing >>



Recommended Controllers >>



Harbin Core Tomorrow Science & Technology Co., Ltd.

Tel: +86-451-86268790

Email: info@coremorrow.com

Headquarters: Building I2, No.191 Xuefu Road, Nangang District, Harbin

Fax: +86-451-86267847

Web: www.coremorrow.com

Shanghai Office: Building 2, No.608 Shengxia Road, Pudong District, Shanghai