

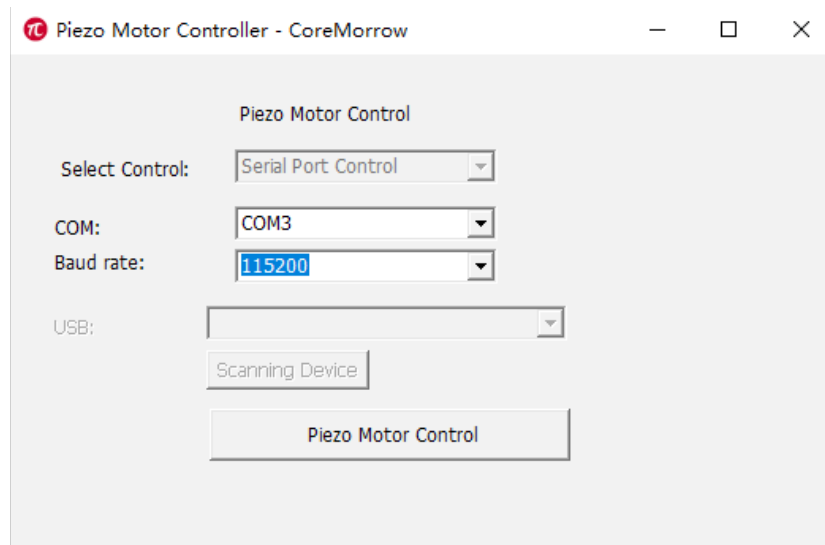
E71.D4E-H_1Channel_Piezo Motor Servo Controller Software

User Guide

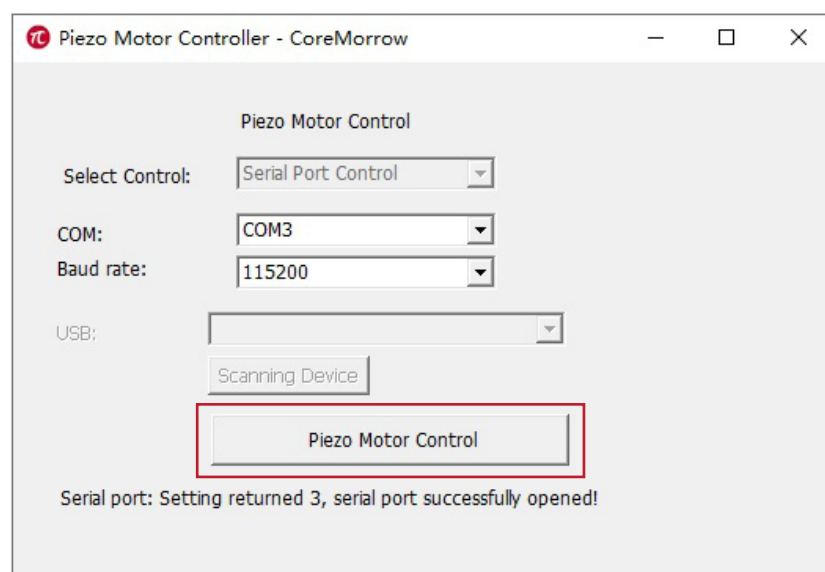
1.Choose Control Interface >>

Piezo controller needs power-on self-test and other operations. It is recommended to connect the hardware device after the controller is powered on for 5 seconds.

Serial port control/RS-422 controller (USB to RS-422)



2.Click "Piezo Motor Control" >>



CoreMorrow Ltd.

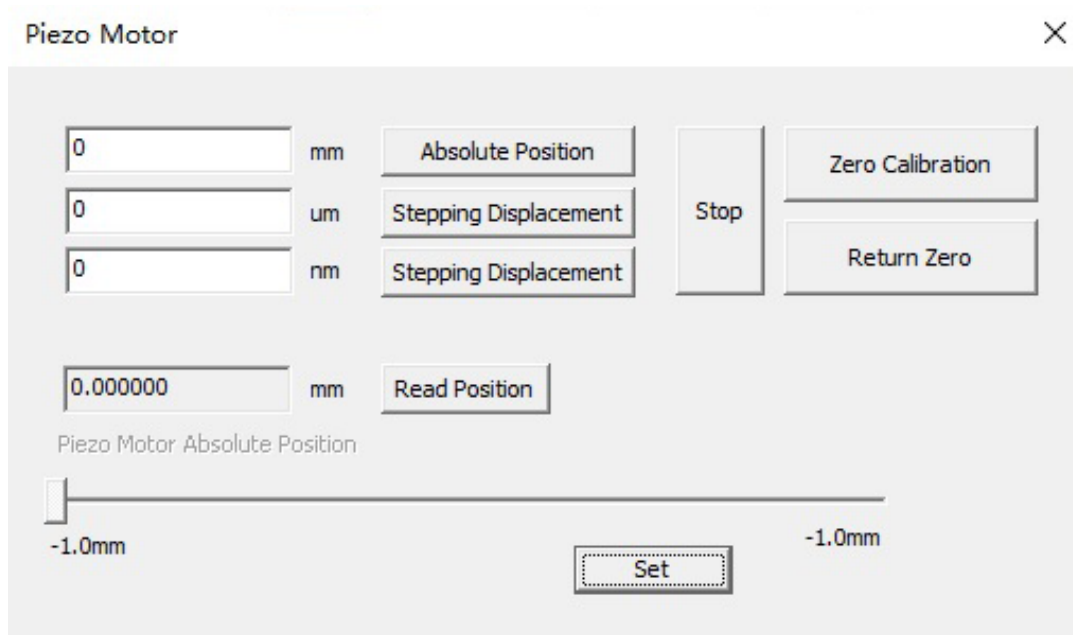
Tel: +86-451-86268790 Email: info@coremorrow.com
Fax: +86-451-86267847 Web: www.coremorrow.com

Headquarters: Building I2, No.191 Xuefu Road, Nangang District, Harbin
Shanghai Office: Building 2, No.608 Shengxia Road, Pudong District, Shanghai

3.Absolute Position Control >>

Fill in the position information to be reached by piezo motor, and click "Absolute Position Control" button to complete the position control;

Stepping Displacement: The current millimeter data sending position, and accumulates the stepping displacement in micron or nanometer units.



The interface is titled "Piezo Motor" and includes a close button (X). It features three input fields for position setting: mm (0), um (0), and nm (0). Each field has a corresponding unit label and a button labeled "Absolute Position". Below these are two buttons labeled "Stepping Displacement". A "Stop" button is located to the right of the stepping displacement buttons. To the right of the "Stop" button are two buttons: "Zero Calibration" and "Return Zero". Below the input fields is a "Read Position" button next to a display showing "0.000000 mm". Underneath the display is the text "Piezo Motor Absolute Position". At the bottom, there is a horizontal slider ranging from -1.0mm to 1.0mm, with a "Set" button below it.

4.Read Position >>

5.Return Piezo Motor Absolute Position >>

Return absolute position information of the current piezo motor, in millimeters.

The slider displays the approximate information of piezo motor, leftmost position is the displacement negative end of the connected piezo motor; rightmost position is the stroke positive end of the connected piezo motor.

6.Stop >>

It means to stop the running operation of piezo motor. For example, the current position is 0, running to 3.0mm, if you encounter problems during operation, you can click the stop button to stop the running piezo motor.



CoreMorrow Ltd.

Tel: +86-451-86268790

Fax: +86-451-86267847

Email: info@coremorrow.com

Web: www.coremorrow.com

Headquarters: Building I2, No.191 Xuefu Road, Nangang District, Harbin

Shanghai Office: Building 2, No.608 Shengxia Road, Pudong District, Shanghai

7.Zero Calibration >>

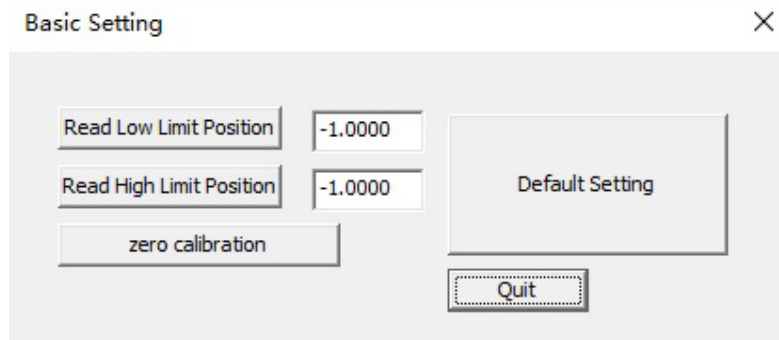
It indicates that piezo motor finds the absolute zero position of grating ruler, and returns to the absolute position before calibration after finding it.

8.Return Zero >>

It indicate that piezo motor returns to zero position, which is generally consistent with absolute zero position of grating ruler.

9.Set >>

Click "Set" button to pop up the device information window.



CoreMorrow Ltd.

Tel: +86-451-86268790

Email: info@coremorrow.com

Fax: +86-451-86267847

Web: www.coremorrow.com

Headquarters: Building I2, No.191 Xuefu Road, Nangang District, Harbin

Shanghai Office: Building 2, No.608 Shengxia Road, Pudong District, Shanghai