

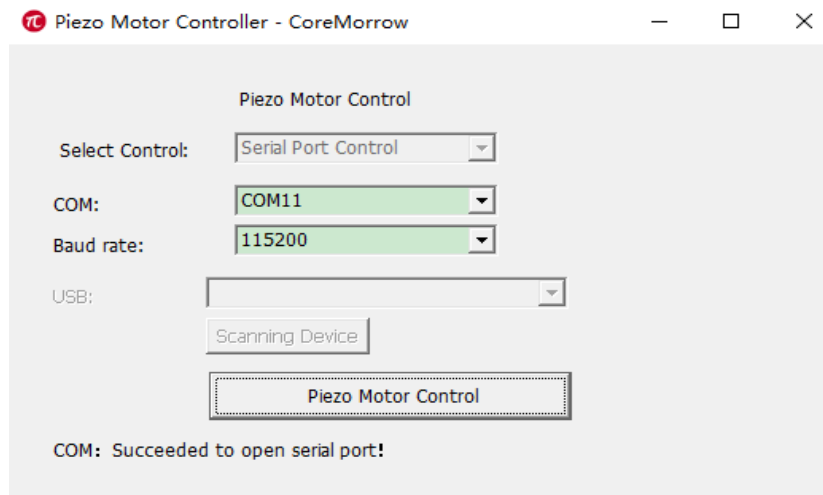
E53.D1E-J Piezo Motor Servo Controller Software

User Guide

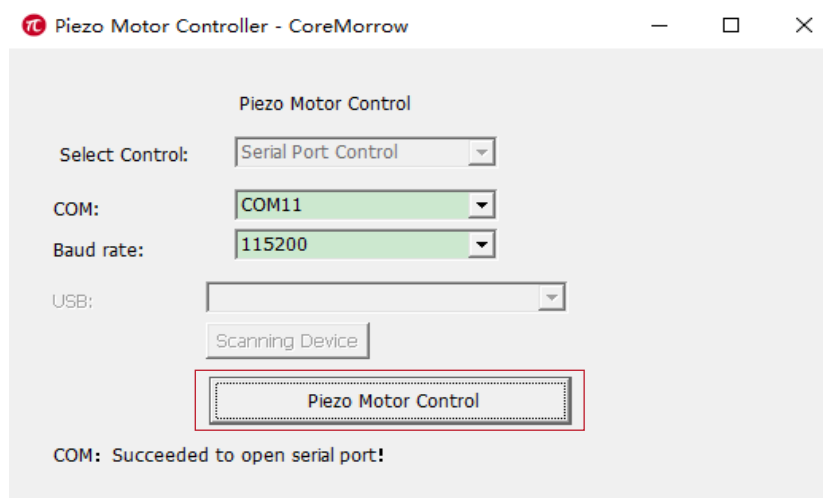
1.Choose Control Interface >>

Piezo controller needs power-on self-test and other operations. It is recommended to connect the hardware device after the controller is powered on for 5 seconds.

Serial port control/RS-422 controller (USB to RS-422)



2.Click "Piezo Motor Control" >>



Harbin Core Tomorrow Science & Technology Co., Ltd.

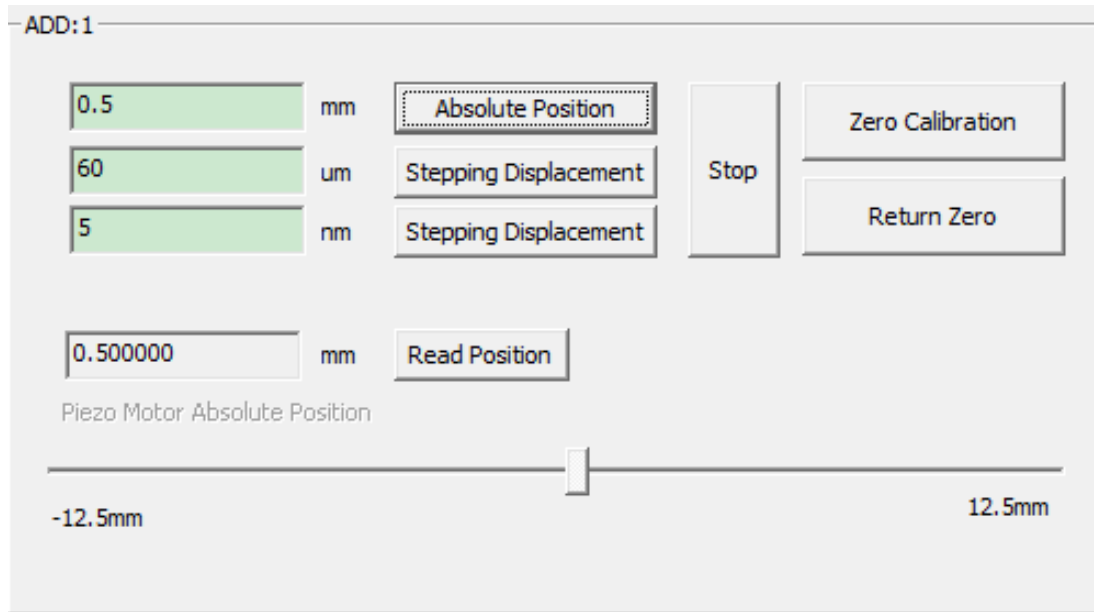
Tel: +86-451-86268790 Email: info@coremorrow.com
Fax: +86-451-86267847 Web: www.coremorrow.com

Headquarters: Building I2, No.191 Xuefu Road, Nangang District, Harbin
Shanghai Office: Building 2, No.608 Shengxia Road, Pudong District, Shanghai

3.Absolute Position Control >>

Fill in the position information to be reached by piezo motor, and click "Absolute Position" button to complete the position control;

Stepping Displacement: The current millimeter data sending position, and accumulates the stepping displacement in micron or nanometer units.



The software interface for Absolute Position Control includes the following elements:

- ADD: 1** label at the top left.
- Three input fields for position:
 - 0.5 mm (highlighted in green)
 - 60 um (highlighted in green)
 - 5 nm (highlighted in green)
- Buttons for each input field:
 - 0.5 mm: Absolute Position (dashed border)
 - 60 um: Stepping Displacement
 - 5 nm: Stepping Displacement
- A central **Stop** button.
- Buttons for **Zero Calibration** and **Return Zero** on the right.
- A readout field showing **0.500000 mm** with a **Read Position** button.
- Text label: **Piezo Motor Absolute Position**.
- A horizontal slider at the bottom ranging from **-12.5mm** to **12.5mm**, with a slider knob positioned at 0.

4.Read Position >>

Return absolute position information of the current piezo motor, in millimeters.

The slider displays the approximate information of piezo motor, leftmost position is the displacement negative end of the connected piezo motor; rightmost position is the stroke positive end of the connected piezo motor.

5.Stop >>

It means to stop the running operation of piezo motor. For example, the current position is 0, running to 3.0mm, if you encounter problems during operation, you can click the stop button to stop the running piezo motor.

6.Zero Calibration >>

It indicates that piezo motor finds the absolute zero position of grating ruler, and returns to the absolute position before calibration after finding it.



Harbin Core Tomorrow Science & Technology Co., Ltd.

Tel: +86-451-86268790

Email: info@coremorrow.com

Headquarters: Building I2, No.191 Xuefu Road, Nangang District, Harbin

Fax: +86-451-86267847

Web: www.coremorrow.com

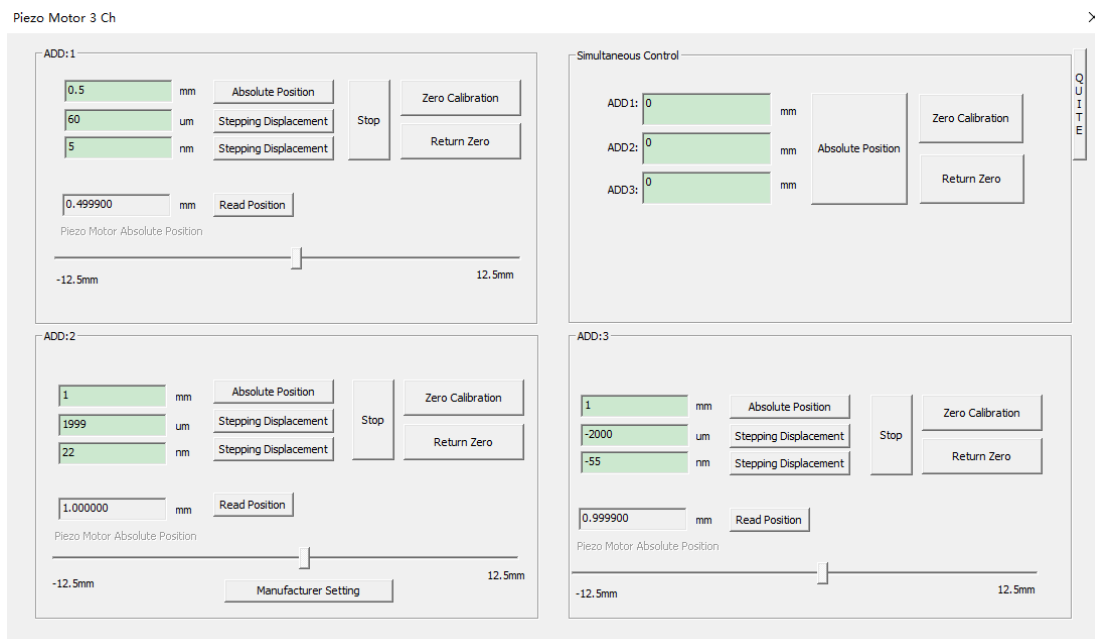
Shanghai Office: Building 2, No.608 Shengxia Road, Pudong District, Shanghai

7. Return Zero >>

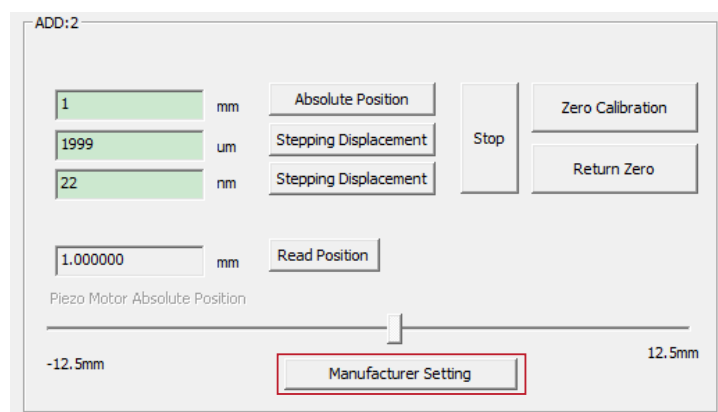
It indicate that piezo motor returns to zero position, which is generally consistent with absolute zero position of grating ruler.

8. Three -Axis Simultaneous Control >>

- (1) Fill in the required absolute position
- (2) Click "Absolute Position" to control 3-Axis



9. Manufacturer Setting >>



Harbin Core Tomorrow Science & Technology Co., Ltd.

Tel: +86-451-86268790 Email: info@coremorrow.com
 Fax: +86-451-86267847 Web: www.coremorrow.com

Headquarters: Building I2, No.191 Xuefu Road, Nangang District, Harbin
 Shanghai Office: Building 2, No.608 Shengxia Road, Pudong District, Shanghai